

# NFPA 90A

## Standard for the Installation of Air-Conditioning and Ventilating Systems

2009 Edition

**Reference:** 4.3.11.1

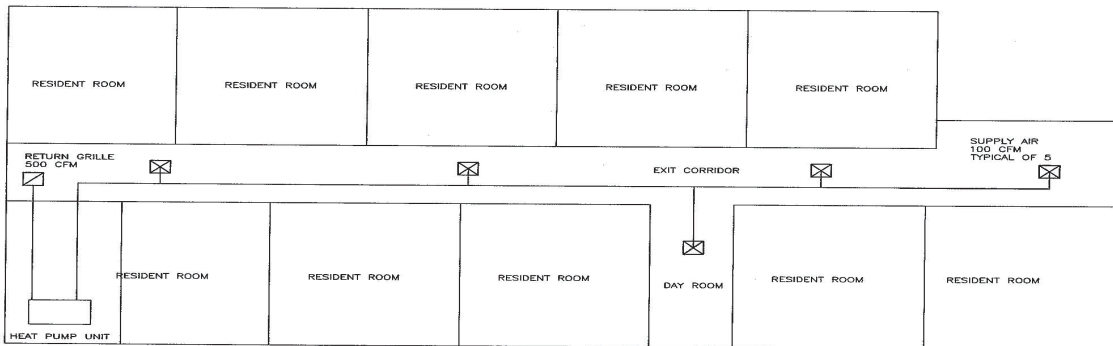
**F.I. No.:** 90A-02-04

**Question No. 1:** Is the intent of the paragraph to require multiple locations for return air in a corridor?

**Answer:** No.

**Question No. 2:** Is one point of return air with multiple supply air locations as indicated on the attached sketch acceptable?

**Answer:** Yes.



**Issue Edition:** 2002

**Reference:** 4.3.11.1

**Issue Date:** 12/19/2007

**Effective Date:** 1/8/2008

Formal Interpretation

# NFPA 90A

## Standard for the Installation of Air-Conditioning and Ventilating Systems

2009 Edition

**Reference:** 4.3.11.1, 3.3.5 and 3.3.21

**F.I. No.** 90A-02-3

**Question 1:** When the resident's room windows are closed, can the 50cfm of air exhausted from the bathroom and drawn from the room in general be in whole or in part made up by infiltration through the NFPA 80 complying clearances around and under the corridor door due to the resultant pressure differences?

**Answer:** Yes.

**Question 2:** Does the corridor described constitute a plenum or air duct as these terms were intended to apply under 90A?

**Answer:** No.

**Issue Edition:** 2002

**Reference:** 4.3.11.1, 3.3.5 and 3.3.21

**Issue Date:** January 24, 2006

**Effective Date:** February 12, 2006

Formal Interpretation

# NFPA 90A

## Standard for the Installation of Air-Conditioning and Ventilating Systems

2009 Edition

**Reference:** 5.3.4.5

**FI No.** 90A-02-02

**Question:** Is it the intent of NFPA 90A: 5.3.4.5 to prohibit the installation of a Type B vent, which is connected to and exhausts a natural gas fire boiler within an environmental air shaft?

**Answer:** Yes.

**Issue Edition:** 2002

**Reference:** 5.3.4.5

**Issue Date:** January 10, 2006

**Effective Date:** January 30, 2006