



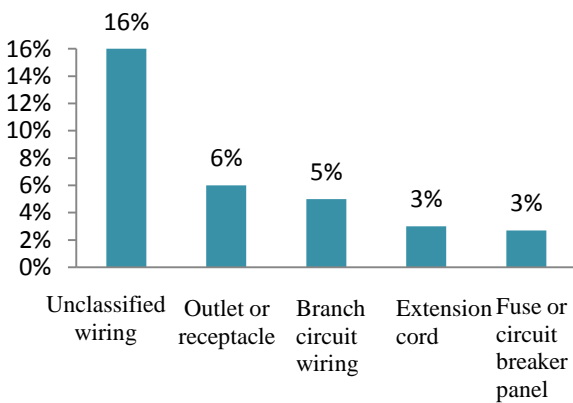
Home Electrical Fires Fact Sheet

U.S. fire departments responded to an estimated average of 43,900 reported U.S. home¹ structure fires involving electrical failure or malfunction in 2005-2009. These fires resulted in 438 civilian deaths, 1,430 civilian injuries and \$1.47 billion in direct property damage.

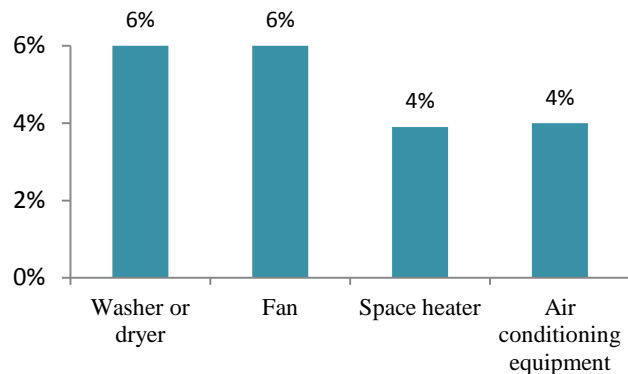
Roughly half of home electrical fires involved electrical distribution or lighting equipment in 2005-2009.

Nearly half of home electrical fires involved other known types of equipment in 2005-2009.

Leading Types of Electrical Distribution or Lighting Equipment Involved in Home Electrical Fires, 2005-2009



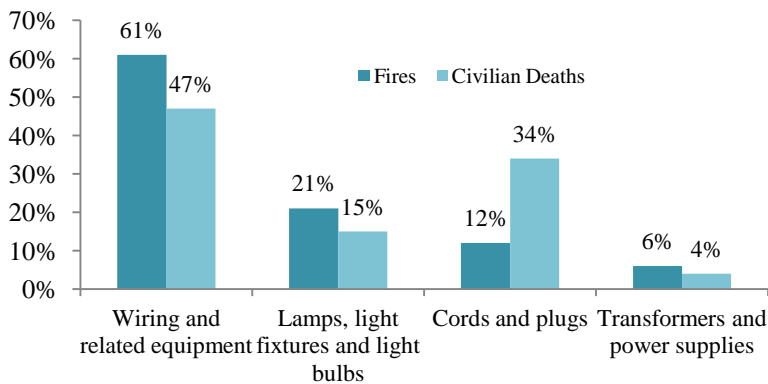
Leading Other Types of Equipment Involved in Home Electrical Fires, 2005-2009



Home Fires Involving Electrical Distribution or Lighting Equipment

U.S. fire departments responded to an estimated average of 23,400 reported U.S. non-confined home structure fires involving electrical distribution or lighting equipment in 2005-2009. These fires resulted in 392 civilian fire deaths, 970 civilian fire injuries, and \$820 million in direct damage.

Home Fires Involving Electrical Distribution or Lighting Equipment, by Major Equipment Group 2005-2009



In 2005-2009:

Some type of electrical failure or malfunction was cited as factor contributing to ignition for 73% of electrical distribution or lighting equipment home structure fires.

One-third (31%) of civilian deaths in these incidents began in the living room, family room or den.

Wire or cable insulation is what ignited first in 31% of electrical distribution or lighting equipment home structure fires.

¹Homes are dwellings, duplexes, manufactured homes, apartments, townhouses, and rowhouses.