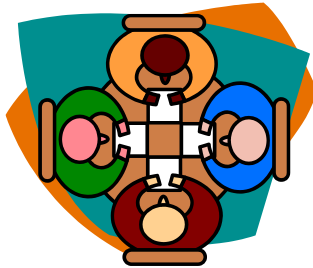




U.S. Public Assembly Property Structure Fires Excluding Eating and Drinking Establishments and Religious and Funeral Properties

In 2000-2004, U. S. fire departments responded to an estimated annual average of **4,910** structure fires in public assembly properties, excluding eating and drinking establishments and religious and funeral properties. These fires caused annual averages of

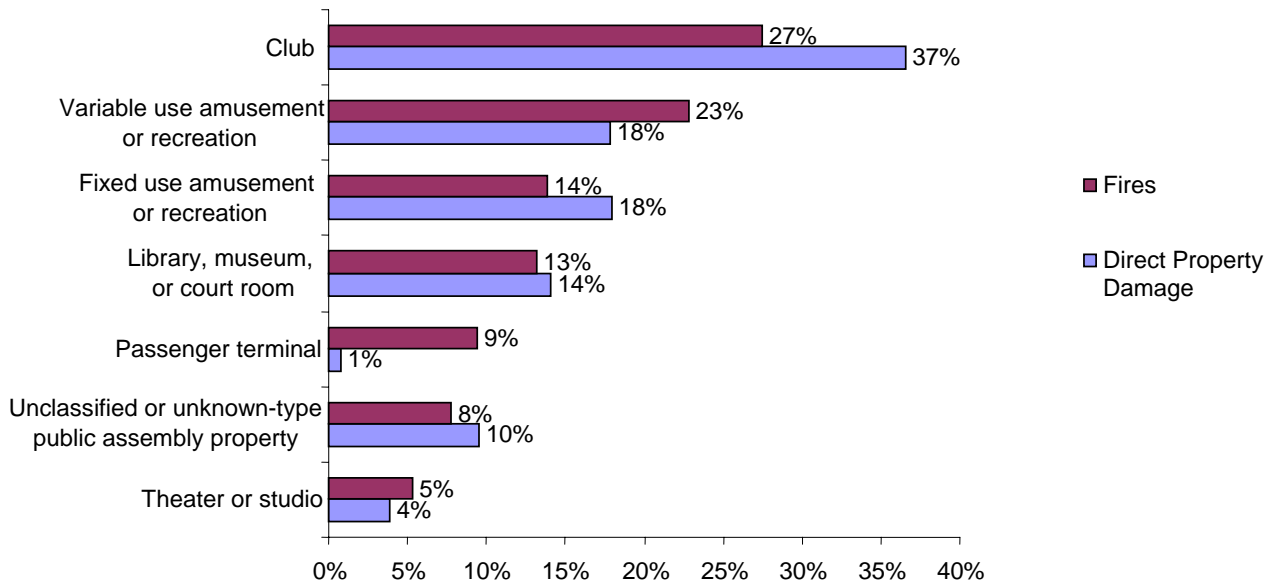


- **1** civilian death
- **52** civilian fire injuries
- **\$94.3** million in direct property damage

These estimates are derived from the U.S. Fire Administration National Fire Incident Reporting System (NFIRS) Version 5.0 and NFPA’s annual fire department experience survey.

- **34%** of structure fires in these properties were contained trash or rubbish fires
- Cooking equipment was involved in **14%** of the fires at these properties
- **13%** of these fires were intentional

Structure Fires in Public Assembly Property, Excluding Eating and Drinking Establishments And Religious and Funeral Property, 2000-2004 Annual Averages



- The kitchen was the leading area of origin for fires in these properties. Fires starting in this area also resulted in the highest number of civilian injuries and direct property damage.