



Errata

NFPA 30

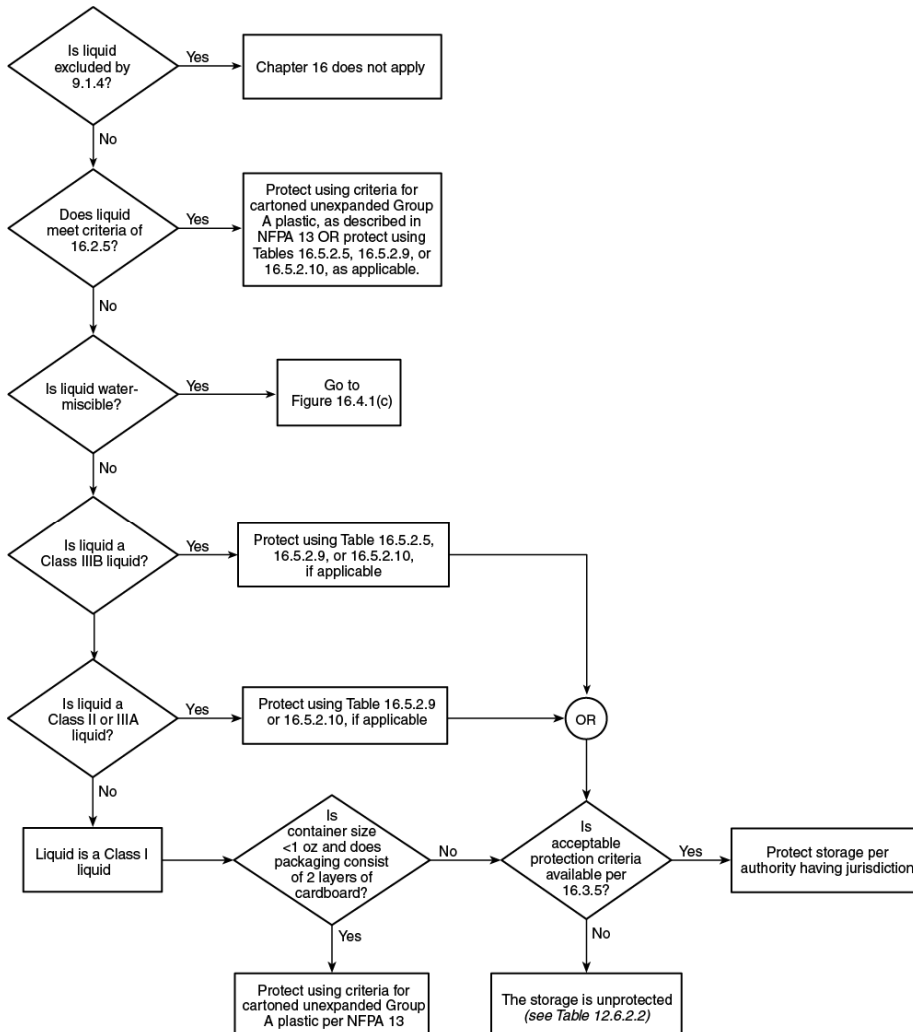
Flammable and Combustible Liquids Code

2015 Edition

Reference: Figure 16.4.1(b), Table 16.5.2.1 and Note 4; and Table 16.5.2.3, Note 5
Errata No.: 30-15-1

The Correlating Committee on Flammable and Combustible Liquids notes the following errors in the 2015 edition of NFPA 30, *Flammable and Combustible Liquids Code*.

1. Revise Figure 16.4.1(b) to read as follows:



2. In Table 16.5.2.1, under section headings “Relieving-Style Containers-Liquid Classes IB, IC, II, IIIA” and “Relieving-Style Containers – Liquid Class IIIB”, change the data in columns 11 and 12 to read as follows

Table 16.5.2.1⁹ Design Criteria for Sprinkler Protection of Single- and Double-Row Rack Storage of Liquids in Metal Containers, Portable Tanks, and IBCs¹⁰

Container Style and Capacity (gal)	Maximum Storage Height (ft)	Maximum Ceiling Height (ft)	Ceiling Sprinkler Protection		In-Rack Sprinkler Protection		Notes	Fire Test Ref. [See Table D.2(a)]
			Sprinkler	Design	Sprinkler	Minimum		
			Type	Response Density (gpm/ft ²)	Type	Discharge Flow (gpm)		
RELIEVING-STYLE CONTAINERS—LIQUID CLASSES IB, IC, II, IIIA								
≤5	14	18	K≥11.2 QR-pendent only	0.65 2000	No in-rack sprinklers required		4	7
9	25	30	K≥8.0 SR or QR (HT)	0.30 3000	K≥5.6 QR(OT)	30	4, 7	1, 5, 7
>5 and ≤60	25	30	K≥11.2 SR or QR (HT)	0.60 3000	K≥5.6 QR(OT)	30	6, 7	1, 7
Portable tanks and IBCs	25	30	K≥11.2 SR or QR (HT)	0.60 3000	K≥5.6 QR or SR(OT)	30	5, 7	1, 7
RELIEVING-STYLE CONTAINERS—LIQUID CLASS IIIB								
≤5 gal	40	50	K≥8.0 SR or QR (HT)	0.30 2000	K≥5.6 QR(OT)	30	4, 7	1, 7
>5 and ≤60	40	50	K≥8.0 SR or QR (HT)	0.30 3000	K≥5.6 QR(OT)	30	4, 7	1, 3, 7
Portable tanks and IBCs	40	50	K≥8.0 SR or QR (HT)	0.30 3000	K≥5.6 QR(OT)	30	4, 7	1, 6, 7

3. Revise Table 16.5.2.1, Note 4 to read as follows:

Notes:

(1) ...

(4) Double-row racks limited to maximum 6 ft (1.8 m) ~~width~~ depth...

4. In Table 16.5.2.3, precede the last line of the Notes with “(5)”, to read as follows:

(5) The minimum in-rack sprinkler discharge pressure shall not be less than a gauge pressure of 10 psi.

Issue Date: December 11, 2014

(Note: Electronic products and pamphlet reprints may have this errata incorporated. For current information about the NFPA Codes and Standards, including this errata, please see www.nfpa.org/codelist)